



MailStore

SERVER

Whitepaper

MailStore Server allows a permanent back-up of the entire corporate email in a central archive. MailStore thereby combines a high-performance and distinguished technology with easy operation and low costs.

Updated: 28.08.2008
© deepinvent Software GmbH



Honored with the German INNOVATION AWARD 2008 of the Initiative Mittelstand in the category "Document Management".



Central E-mail Archiving the Easy Way



MailStore Server is an e-mail archiving solution for SMBs. It combines sophisticated storage technology with easy operation and low costs. Installed on any Windows operating system, all archiving, retrieval and maintenance tasks can be performed from one single Outlook-Style user interface. MailStore comes with its own built-in database server, so you don't have to pay extra license fees for Microsoft SQL Server or Oracle.

- Software-based e-mail archiving solution
- For small and medium-sized businesses
- Facilitates archiving mail servers and clients
- Few hardware and software requirements

Advantages for your business

- Helps you to comply with legal regulations
- Permanent load reduction of the mail server
- Independence of PST files
- Consolidation of dispersed emails
- Reduction of memory requirements
- Easy data backup
- Effective protection against data loss
- Fast search access for all users

Archives multiple e-mail systems

- Microsoft Outlook 2000, XP, 2003 and 2007
- Microsoft Outlook Express and Windows Mail
- Microsoft Exchange Server Mailboxes
- Microsoft Exchange Server Journaling
- Microsoft Exchange Server Public Folders
- AVM KEN! Server
- Mozilla Thunderbird and SeaMonkey
- Any mail server via IMAP or POP3
- e.g. AOL Mail or Google Mail
- PST, EML and other files
- MailStore Proxy Server – automatic archiving of all incoming and outgoing e-mails (with or without Microsoft Exchange)

Advantages for Your Business

Permanently increase security and availability of the information in your business by archiving E-mails with MailStore Server.

Technical Advantages

Release mail server resources

Mail Servers such as Microsoft Exchange are not designed for storing large amounts of data. The constantly increasing volume of e-mails pushes these systems to the limits of their capacity. With stability decreasing, the administration of these systems becomes increasingly costly and time-consuming.



By archiving with MailStore Server, e-mails can be deleted from the server mailboxes while remaining available in their entirety. This frees up server resources and reduces the cost and effort of server administration. If desired, MailStore can delete e-mails from these mailboxes automatically after archiving.

Consolidation of e-mails and independence of PST files

E-mails stored on the user systems are not reliably and permanently maintainable for the business. E-mails can be lost at any time through defective PST-files, system failures or user error.

With MailStore, not only mail servers but also client systems such as Microsoft Outlook and Mozilla Thunderbird can be archived. Additionally, PST files can be archived through a direct import. In this way, the data security can be ensured permanently and independent of individual users or PC systems.

Simplification of backup and recovery

Due to the ever increasing volume of e-mails, performing backups and recoveries is becoming more and more difficult and time-consuming.

With MailStore Server, backups of the entire e-mail archive, including all settings, can be created per mouse click. In the event of damage or loss of data, an existing backup can be restored in a new MailStore Server installation within minutes.

Economical Advantages

Eliminating mailbox restrictions

As a result of the heavy workloads of the mail servers, often, the size of user mailboxes is restricted. This forces users to expend valuable time on mailbox administration and to delete “less important” e-mails.

MailStore Server can remove e-mails from the mailboxes automatically after archiving, thus keeping the size of the mailbox continuously low.

Avoiding loss of data

A large percentage of information critical to business is stored in e-mails. Thus, loss of data always results in an economic loss for the company as well. In addition to technical causes often times the loss of e-mails can be attributed to the users themselves. Frequently, entire mailboxes are deleted completely and irretrievably by an employee leaving the company.

With MailStore Server, databases of any size can be stored securely and permanently. Once archived, e-mails cannot be deleted by the user without the appropriate assignment of permission.

Up to 75% of the information critical to business are stored in e-mails

An estimated 60 to 70% of all communication in business is done by e-mail



Increasing productivity through fast and convenient access

One of the prerequisites for high productivity is fast access to the information needed. Productivity is not only impaired by loss of data, but also by slow search procedures resulting from overburdened e-mail systems.

MailStore Server provides all its users with fast and convenient access to the archived e-mails. The powerful full-text search browses through e-mails and any file attachments within fractions of a second. Alternatively, e-mails can be located through the original folder structure. In addition, access authorizations to sections of the archive allocated to other users can be granted, thus making teamwork easier in your business.

Legal Advantages

Depending on the country's law, companies and freelancers have to archive all relevant email over many years. MailStore Server helps you comply with legal requirements.

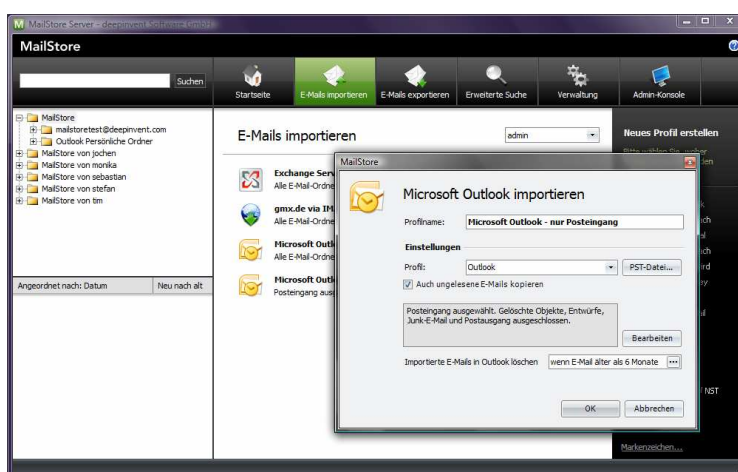
Versatile Archiving Functions

MailStore can archive e-mails centrally from a variety of different sources. These include, in addition to the e-mail servers, the e-mail clients of the users.

Archiving E-mails Located On Local User Systems

With the MailStore Client software installed on their computers, users can archive their local e-mails (e.g. from Microsoft Outlook) to the MailStore server. The archiving process can be started manually by the users or completely automated according to a schedule.

Additionally, MailStore offers the opportunity to archive PST files through a direct import.

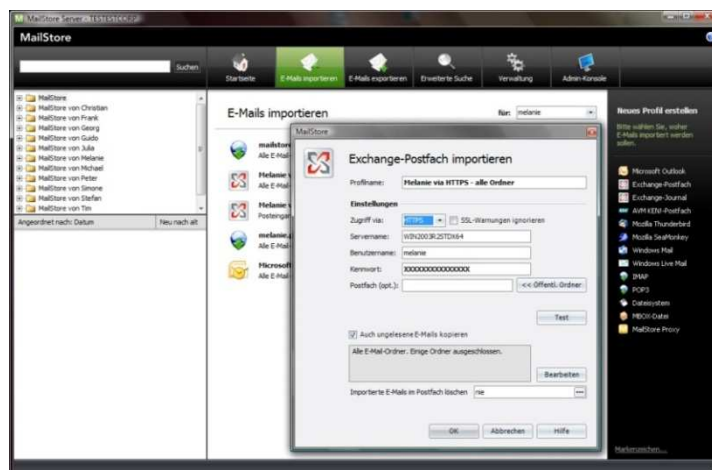


Supported e-mail systems and file formats:

- Microsoft Outlook 2000, XP, 2003, 2007
- Microsoft Outlook Express 6.0
- Microsoft Windows Mail
- Microsoft Windows Live Mail
- Mozilla Thunderbird 1.0, 1.5, 2.0
- Mozilla SeaMonkey 1.0
- RFC822/MIME-compatible e-mail files (.eml)
- PST-files
- MBOX-files

Archiving E-mail Server

MailStore can archive the mailboxes of a variety and any number of mail servers. Unlike archiving client systems as described above, this does not require any installation of MailStore Client software on the user systems. Administrators can set up and execute the archiving process for all mailboxes centrally.



Supported mail servers:

- Microsoft Exchange Server 2003/2007 Mailboxes
- Microsoft Exchange Server 2003/2007 Journaling
- Microsoft Exchange Server 2003/2007 Public Folders
- incl. Windows Server Small Business Edition
- AVM KEN! 4.0 mailboxes
- IMAP4-compatible Server
- POP3-compatible Server

Archiving All Incoming and Outgoing Emails

MailStore can automatically archive the entire incoming and outgoing e-mail traffic. If an Exchange server is used, the archiving process can be executed through its Journaling function. In all other environments, the MailStore Proxy (SMTP and POP3 proxy server) can be used. The MailStore proxy server is available to all MailStore Server customers free of charge.

Using Archived E-mails

Users can view, search and comfortably use the archived e-mails through the MailStore Client software.

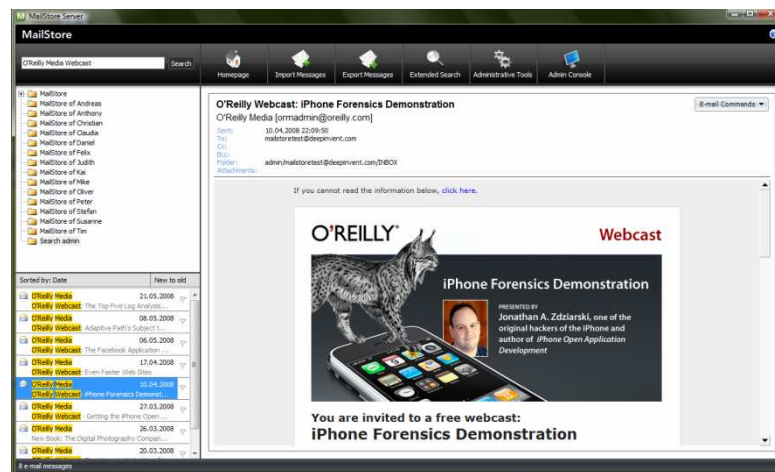
**network
Computing**
Since 1988 - 100% German - 100% IT-Service

"MailStore displays all messages within each mailbox in an elegant and user efficient interface. An integrated quick search browses all archived e-mails and attachments in an impressive speed."

Network Computing,
edition 02/2008 (German
Issue)

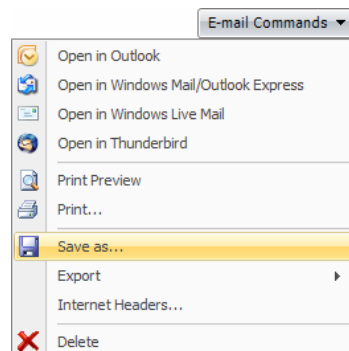
Archived E-mails Are Available At Any Time

All users can search their e-mails and file attachments in a fraction of a second. Alternatively, e-mails can be located through their original folder structure. A powerful extended search allows for a precise refinement of the search results. Depending on their privileges, users may also search the archived data of other users.



Working with e-mails through an already familiar interface

Archived e-mails can be viewed directly in MailStore. The display corresponds to that of already familiar applications, e.g. Microsoft Outlook. File attachments can be opened as usual as well, e.g. by double-click.



Restoring e-mails to their source application

To reply to or forward an archived e-mail, simply restore it to the source application (e.g. Microsoft Outlook or Mozilla Thunderbird) with a click of the mouse.

Backup and Export

Backup

Backup to CDs or DVDs

MailStore can burn the entire e-mail archive or parts of it to CD or DVD. MailStore comes with all necessary components and does not require a separate installation of any burning software.

Incremental backup directly from MailStore

MailStore can perform single or regular backups of the entire e-mail archive to any network. If desired, only those e-mails that have changed since the last backup was executed will be backed up. The backup can be executed for the entire archive (incl. the complete range of data and settings) or parts of it in form of single .eml files.

Using external backup software

If external backup software is used, simply include the MailStore database directory in the existing backup procedure.

Restoring a Backup

In the event of damage or loss of data, an existing backup can be restored in a new installation of MailStore Server within minutes. Because the backup not only contains the archived e-mails, but includes all settings (such as users and privileges), the resulting downtimes for your company are minimal. The recovery can be performed as simple copy procedure in the file system.

Exporting Options

In addition to a backup of the entire archive, single e-mails or entire folders can be exported in different ways:

- Microsoft Outlook
- Microsoft Exchange mailbox
- Microsoft Outlook Express
- Windows Mail
- AVM KEN! mailbox
- IMAP- mailbox
- Forwarding via SMTP
- CDs/DVDs in RFC822 .eml file format
- Local folders or network shares (RFC822 .eml Files)



Technical Specifications

Maximum number of users: Unlimited

Maximum number of mailboxes: Unlimited

Maximum number of mail servers: Unlimited

Maximum size of the archive: Unlimited

Supported languages: English, German

To operate MailStore Server, neither a Windows Server operating system nor a database system such as Microsoft SQL Server is needed. All required components are already integrated in the MailStore Server setup.

System Requirements

- Intel® Pentium® III Processor
- 256 MB RAM

Supported operating systems (MailStore Server and -Client):

- Windows 2000, Service Pack 3 or newer
- Windows XP, Service Pack 2 or newer
- Windows Server 2003
- Windows Server 2008
- Windows Vista
- Windows Vista 64-bit Edition
- Windows Small Business Server 2003
- Windows Small Business Server 2003 R2
- Windows Small Business Server 2008

Performance

E-mails and file attachments are stored in Firebird-embedded databases combined with a MailStore-integrated file system. The e-mails are reproduced in facsimile, MIME-compatible and can be restored from MailStore in standard format at any time and without any loss of data.



- Data transfer rate when archiving: approx. 18,000 e-mails per hour
- Data transfer rate when exporting: approx. 200,000 e-mails per hour
- When archiving, file attachments are compressed automatically and according to an intelligent algorithm.
- MailStore stores identical file attachments only once in the archive (single-instance storage)
- Upon archiving, e-mails and file attachments are automatically indexed for the full-text search
- The file attachments to be indexed can be free defined

Contact



CRMADDON Factory GmbH

Am Bächle 12
86488 Breitenthal
Germany

Phone	+44 207 099 1815 +49 8282 800 400 001 203 404 7508
Fax	+49 8282 800 40 29
E-mail	marketing@crmaddon.com
Web	www.crmaddon.com

Download Now and Try MailStore Server Free For 30 Days

MailStore Server is available for download at www.mailstore.com. The trial version, including all archived e-mails and settings, can be updated to a full version at runtime.