

## visionapp Remote Desktop (vRD)

Version Overview



visionapp  
**Remote Desktop**

**Product Information**

[visionapp.com/vRD](http://visionapp.com/vRD)

**Head Office  
Frankfurt a.M. (D)**  
Helfmann-Park 2  
65760 Eschborn  
phone: +49-69-79583-0

**London Office (UK)**  
107-111 Fleet Street  
London EC4A 2AB  
phone: +44-20-7936-9112

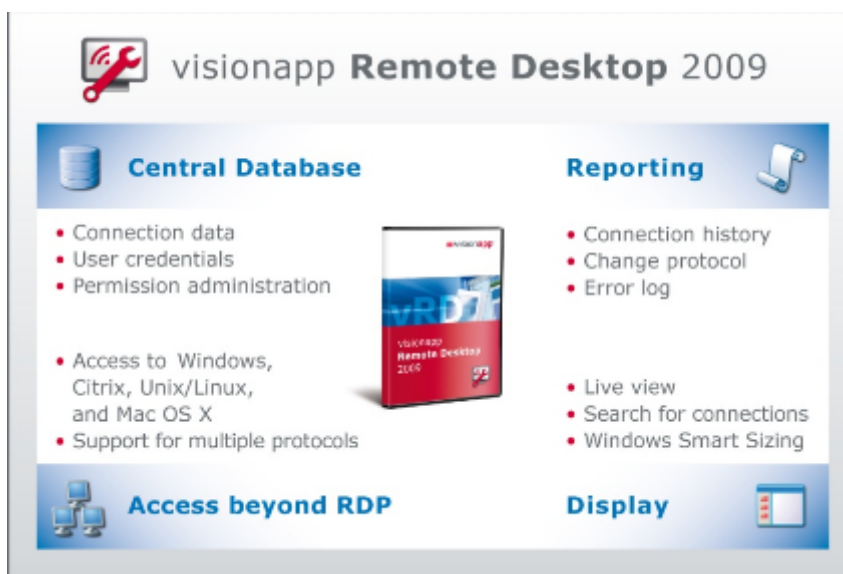
**Sacramento Office (US)**  
12240 Herdal Drive, Suite 14  
Auburn, CA 95603  
phone: +1-530-886-8800

**Zürich Office (CH)**  
Geschäftshaus Adlikerkreuz  
Wehntalerstrasse 190  
8105 Regensdorf  
phone: +41-44-5202028

## visionapp Remote Desktop 2009 at a Glance

visionapp Remote Desktop is a powerful tool for managing and accessing multiple server and desktops. It is ideal for administrators who need to maintain simultaneous connections to multiple systems.

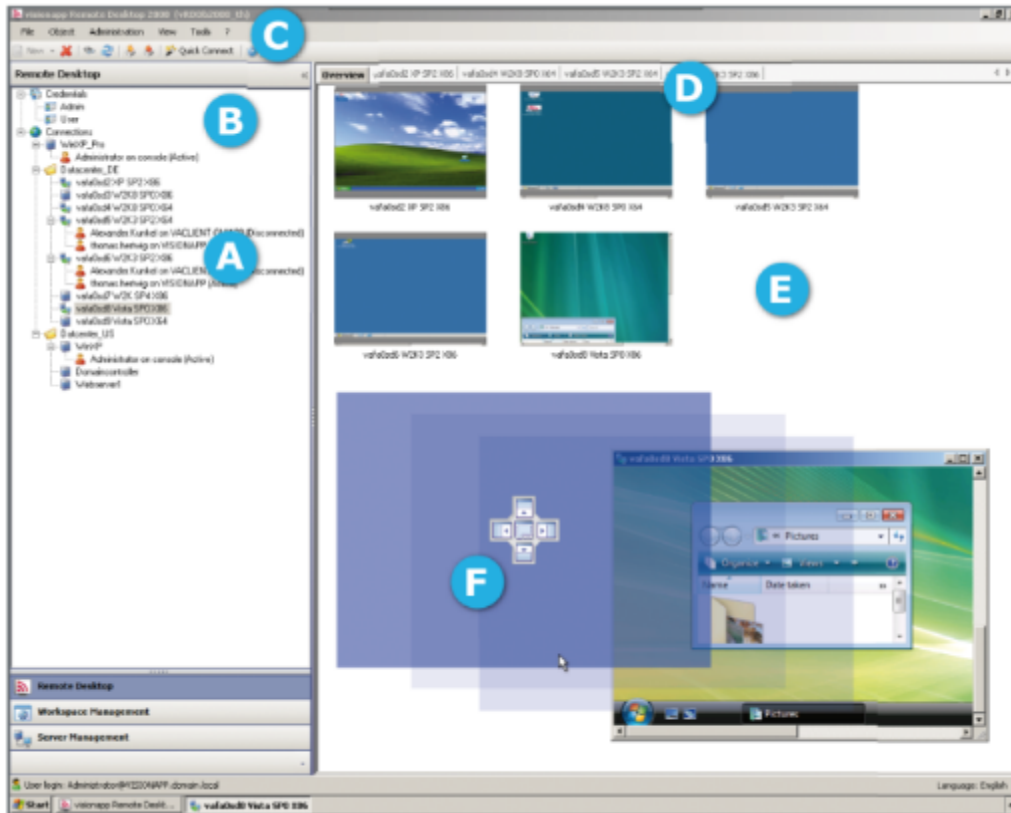
Connection-specific settings and login credentials can be organized for quick access and simplified day-to-day usage. Simplifying the administration of their systems, more than 120,000 administrators worldwide consider vRD an indispensable tool for recurring administrative tasks. Through the integration of different connection protocols you will be able to administrate remote computers in Windows, Citrix, Linux/Unix and Macintosh environments.



### Main Benefits of vRD 2009

- > Effective management of connections to remote computers via different protocols
- > Significant time saving through easy handling
- > In database mode, administrators can work simultaneously with the same objects – supported by a detailed permission administration
- > Logging of errors, changes and accesses to vRD 2009
- > Connection history provides an overview of recently connected computers
- > Overall view of all computers connected
- > Secure access to systems via Microsoft TS Gateway (using SSL), Network Level Authentication or via server authentication

## vRD 2009 Quick Guide



### A: Folder Structure

Computers can be logically grouped according to the company's structure. Connected users are displayed underneath the active connections.

### B: Login Credentials

Central storage of the information needed to access remote computers.

### C: Menu Bar

Use icons to perform administrative tasks like export/import with a single click.

### D: Tabs

Overview tab with all active connections as thumbnails - each active connection in a separate tab.

### E: Display Options

Individually display active connections for instance in a separate window.

### F: Position Navigator

Individually arrange active connections in separate windows. Create an overall view of all active connections.

Storing Configuration Data	vRD 1.5	vRD 2008	vRD 2009	Remarks
Save current settings to <b>Registry</b>	✓	✓	✓	Connections and Credentials
Save current settings to a <b>.xml file</b>	⊘	✓	✓	Connections and Credentials
Save current settings to one or more <b>databases</b>	⊘	✓	✓	Connections and Credentials

Usability	vRD 1.5	vRD 2008	vRD 2009	Remarks
Multiple instances	⊘	⊘	✓ <sup>(1)</sup>	Multiple instances of vRD 2009 may be started, so you can optionally work for example in local and in database-mode. (1) Full version only
Online help	✓	✓+	✓+	On demand you will get additional information. With vRD 2008 and 2009 this information is available also for dialogues and context windows.
Menu item "Support"	⊘	⊘	✓	You may request support directly from the console.
Check of components	⊘	⊘	✓	Checks automatically if components necessary for working with vRD 2009 are working properly (RDP, ICA, VNC, SSH, Telnet).
Tree view (Navigation Pane)	✓	✓	✓	Objects are displayed in hierarchical order similar to Windows Explorer and thus may be managed very easily.
Quick and easy connection to Computers via mouse click	✓	✓	✓	Connection to a computer may easily be established via single mouse click.
Hotkey support	✓	✓+	✓+	Hotkeys can be used for quick access to common administrative tasks like renaming objects (F2). Starting with vRD 2008 additional hotkeys are available.
Create folders for connection objects	✓	✓	✓	Individual view can be customized.
Change object sort order	✓	✓	✓	Sort order may be customized individually.

Usability	vRD 1.5	vRD 2008	vRD 2009	Remarks
Sorting function just like Windows	☒	☒	✓	Folders at the upper area, single objects beneath.
Sort connections alphanumerically	✓	✓	✓	Sorting connections makes finding objects quite easy particularly in large environments.
Search option	☒	✓	✓	Via "Search" option (Strg+F) particularly in large environments computers may be found very easily.
Assign credentials to folders	✓	✓	✓	One credential setting may be assigned to each folder.
Multi-Language-Support	✓	✓	✓	User Interface may be switched between German and English.
Copy connections	☒	✓	✓	Connections can be copied easily via the context menu or via copy & paste.
Move connections	✓	✓	✓	Connections may be moved easily via the context menu or via drag & drop.
Multi selection	☒	☒	✓	Working on multiple objects simultaneously.
New connection name as computer name	☒	✓	✓	On default a computer to connect to will automatically have the name of the new connection.
View settings will be saved when application is closed	☒	✓	✓	If vRD 2008 or 2009 is connected to a database, the view settings (expanded folders) will be saved automatically on application shutdown. When the application is reopened, users will have their last view settings again.
No possibility to create more than one connection or credential with the same name within one folder	☒	✓	✓	This avoids errors and obscurities.
Import Computers directly from Active Directory	☒	✓	✓	Import a big number of computers very easily.
Splash Screen	✓	☒	☒ (1)	Splash Screen appears on start-up. (1) Full version only

Display	vRD 1.5	vRD 2008	vRD 2009	Remarks
Tab view	✓	✓	✓+	Each active connection will be displayed on its own tab. With vRD 2009 the logged in user and the used protocol can be displayed at the tab as an option.
Overview tab	✓	✓+	✓+	All active connections are being displayed in <b>one</b> view. Via single mouse click on a thumbnail the view will change to the according tab. With vRD 2008 and 2009 the size of the thumbnails may be configured.
Multi-Monitor-Support	⊘	✓+	✓+	Enables views on one or multiple screens. With vRD 2008 and 2009 also possible with separate windows. With vRD 2009 a connection may be opened on a certain monitor.
Smart Sizing of connections (RDP or VNC)	⊘	⊘	✓	The desktop of the connected computer will always be displayed completely without scroll bars even when you enlarge or minimize the corresponding window.
Launch new connections directly in full screen mode	✓	✓	✓	In full screen mode working often is much easier.
Launch new connections directly in a new window	⊘	✓	✓	Separate windows may be moved between multiple monitors.
Dynamic screen-sizing per session	⊘	✓	✓	The active tab may be displayed in a separate window via Drag & Drop or by double-clicking it. By the same way it may be reversed. From a once chosen separate window the Full-Screen-Mode can be activated by another Double-click on the window title. This action may be reversed by the minimize command.
Live Overview	⊘	✓	✓	In the work area you may arrange the connection windows individually – this offers Live-View-Options.

Display	vRD 1.5	vRD 2008	vRD 2009	Remarks
Highlighted active tab	⊘	✓	✓	For a better overview the tab that has the focus will be highlighted.

Connectivity	vRD 1.5	vRD 2008	vRD 2009	Remarks
Connect via RDP	✓	✓	✓	
Connect via ICA	⊘	⊘	✓	
Connect via VNC	⊘	⊘	✓	
Connect via SSH	⊘	⊘	✓	
Connect via Telnet	⊘	⊘	✓	
Connection wizard	⊘	✓	✓	There is a wizard available to set up new connections.
Workspace Control	✓	✓	✓	Users may switch between active connections without restarting the application.
Reconnection	⊘	⊘	✓	A session to a computer may be reconnected by just one click.
Connect/Disconnect for all computers within one folder	✓	✓	✓	All computers within one folder may be connected or disconnected at a time.
Restart/Shut down of all connections in a folder	⊘	⊘	✓	All computers within one folder may be restarted or shut down simultaneously.
Quick Connect	⊘	✓	✓+	Connect to a computer without creating an explicit connection. Quick Connect may be launched by clicking F9 key. With vRD 2009 you may also select the required protocol.
Connect as another user	⊘	✓	✓	Logging on with another user than assigned.
Automatic reconnect after rebooting a computer	⊘	✓	✓	After rebooting a computer vRD 2008/2009 will automatically reconnect to that computer. A manual reconnect is no longer necessary. The reboot is displayed in tree view with an according symbol.

Connectivity	vRD 1.5	vRD 2008	vRD 2009	Remarks
Administrative Features	⊘	✓	✓	Remote Features like Shut-down, Reboot or Wake-On-LAN may now be initiated via the context-menu.
Context menu	✓	✓+	✓+	Independent from the configured connection settings with vRD 2008 or 2009 the display mode for a connection may be changed via the context menu without changing the saved settings.

Configuration Management	vRD 1.5	vRD 2008	vRD 2009	Remarks
Console for centralized access	✓	✓	✓	All features are available from <b>one</b> User Interface.
Auto-Fit tabs	✓	✓	✓	When connecting to a computer the display will automatically adjusted to the tab size.
Individual display resolution per tab	✓	✓+	✓+	Compared to vRD 1.5 vRD 2008 and 2009 support considerably more display settings.
Remote session may be displayed in full-screen-mode	✓	✓	✓	Active session will be displayed in full screen mode
Remote session may be displayed in a separate window	⊘	⊘	✓	Separate window may be placed individually on the desktop.
Launch a console session	⊘	✓	✓	Working in console session might be necessary for dedicated administrative tasks (e.g. taking over a still open, local session in order to close it).
Default settings	⊘	✓	✓	Default settings that apply to all new connections may be defined.
Object description	✓	✓	✓	Additional information may be added (e.g. location of the computer). Will be displayed as tool tip.
Port Settings	✓	✓	✓	According to the company's rules the port may be adjusted.

Configuration Management	vRD 1.5	vRD 2008	vRD 2009	Remarks
When creating credentials the network may be browsed for users	⊘	✓	✓	Defining of users, who may connect to terminal servers, will be simplified, thus.
Credentials will be inherited from the above level folders	✓	✓	✓+	It is not necessary to create credentials for each object. With vRD 2009 also possible across multiple folder levels.
Local drives, printers, serial ports, audio and smart cards will be connected	✓	✓	✓	Settings are similar to those available with standard RDP or ICA connections.
Color depth can be defined	✓	✓	✓	Settings are similar to those available with standard connections.
Remote Sound Support	✓	✓	✓	Settings are similar to those available with standard RDP or ICA connections.
Windows key combinations	✓	✓	✓	Local key strokes apply in the remote session.
Configure display options (wallpaper, show window content while dragging, designs, bitmap caching etc.)	✓	✓	✓	Settings are similar to these available with standard RDP or ICA connections.
Define MAC-Address (required for Wake-On-LAN)	⊘	✓	✓	Using the MAC address a computer may be restarted remotely via Wake-On-LAN (Magic Package).
Define Management Board URL	⊘	✓	✓	The connection may be established either via HTTP or HTTPS.
Importing connections	⊘	✓	✓	A set of connections may be imported via a .csv file <sup>1</sup> or directly from Active Directory. Combined with configured default settings this allows to set up a huge range of computers very quickly.

<sup>1</sup> Syntax for CSV-file: Connection Name, Computer Name, MAC Address, Management Board URL, Protocol, Port, Folder (you may also use other delimiters than comma).

Configuration Management	vRD 1.5	vRD 2008	vRD 2009	Remarks
Multiple simultaneous administrators	⊘	✓	✓	Available only when in database-mode. Users authorized on the database may work parallel and thus spread the workload. Multiple administrators may work on the same stored connections.

Security	vRD 1.5	vRD 2008	vRD 2009	Remarks
Log on dialog	⊘	⊘	✓	You may log in independently of your windows login with another user name.
Display connection information	⊘	✓	✓+	Underneath the computer object all active user sessions will be displayed. Even if a session is inactive information will be displayed via RDP. With vRD 2009 this is also possible for all objects in a folder.
Network Level Authentication	⊘	⊘	✓	Only via RDP.
Server authentication	⊘	⊘	✓	Only via RDP.
Supporting Microsoft Terminal Services Gateway	⊘	⊘	✓	Only via RDP.
Log Off Users	⊘	✓	✓+	Connected users may be logged off one by one through vRD 2008. In vRD 2009 all users of a certain computer may be logged off, though.
Customized messages (via RDP or ICA)	⊘	⊘	✓	Users may be informed about planned activities on a computer.
Defining User specific credentials for accessing computers	✓	✓	✓	It is possible to access the computer objects using different roles (e.g. local or domain admin).
Session credentials will be stored centrally	✓	✓	✓	When a password has to be changed not all computer connections have to be adjusted. Credentials may be changed centrally.

Security	vRD 1.5	vRD 2008	vRD 2009	Remarks
Session credentials will be encrypted and password protected when saved	⊘	✓	✓	The data is safe, because it cannot be used elsewhere.
Credentials are visible and changeable for the creator only	⊘	✓	✓	In database mode it is up to the creator to decide, who may use the credentials.
Permission administration	⊘	⊘	✓	In database mode you may grant the access to objects and functions.

Reporting	vRD 1.5	vRD 2008	vRD 2009	Remarks
Error Log	⊘	✓	✓	Available with vRD 2008 and 2009 -only in database mode. It is possible to get detailed information about errors happened.
Change Log	⊘	✓	✓	Available with vRD 2008 and 2009 -only in database mode. It contains all data related to every action performed in the console (e.g. saved objects or changed object settings).
Security Log	⊘	✓	✓	Available with vRD 2008 and 2009 -only in database mode. It contains information related to all logon/logoff events.
History	⊘	✓	✓+	Used connections will be displayed and can be reopened. Furthermore the connections can be sorted. This is helpful particularly in large environments. With vRD 2009 also start and end of a session, the used protocol and the user is displayed.

Supported OS	vRD 1.5	vRD 2008	vRD 2009	Remarks
Windows XP	✓	✓	✓	
Windows XP 64bit	⊘	✓	✓	
Windows Vista	✓	✓	✓	

Supported OS	vRD 1.5	vRD 2008	vRD 2009	Remarks
Windows Vista 64bit	⊘	✓	✓	
Windows Server 2003	✓	✓	✓	
Windows Server 2003 64bit	⊘	✓	✓	
Windows Server 2008	⊘	✓	✓	
Windows Server 2008 64bit	⊘	✓	✓	

Supported Protocols	vRD 1.5	vRD 2008	vRD 2009	Remarks
RDP 5.x	✓	✓	✓	
RDP 6.0	✓	✓	✓	
RDP 6.1	⊘	✓	✓	
ICA 10.2x or newer	⊘	⊘	✓	
VNC	⊘	⊘	✓	Integrated in vRD 2009.
SSH	⊘	⊘	✓	Provided by PuTTY integrated in vRD 2009.
Telnet	⊘	⊘	✓	Provided by PuTTY integrated in vRD 2009.

Supported Database	vRD 1.5	vRD 2008	vRD 2009	Remarks
Microsoft SQL 2000	⊘	✓	✓	
Microsoft SQL 2005	⊘	✓	✓	
Microsoft SQL 2008	⊘	⊘	✓	
Microsoft SQL Express	⊘	✓	✓	

Database Connection Wizard	vRD 1.5	vRD 2008	vRD 2009	Remarks
Connect to an existing database	⊘	✓	✓	If a vRD database was already installed, you may connect to this database.
Create a new Database on an existing database server	⊘	✓	✓	A new, empty database will be created on Microsoft SQL Server (also possible with Express Edition) exclusively for vRD.

Database Connection Wizard	vRD 1.5	vRD 2008	vRD 2009	Remarks
Create a new instance of Microsoft SQL Express including a database	⊘	✓	✓	SQL Express will be installed and an empty vRD database created on that.

Backup and Restore	vRD 1.5	vRD 2008	vRD 2009	Remarks
Settings can completely be saved to a backup	✓	✓+	✓+	Improved backup options are available since vRD 2008 or 2009 can be used to save the settings on a database.
Selected computer objects can be exported or imported	✓	✓	✓	It is possible to save selected settings.
Using backup files in different environments	✓	✓	✓	Backup files can be used in environments different from the originating environment.
Exported settings are password-protected	✓	✓	✓	At any time the data is safe, since unauthorized persons do not know the password.
Export of connections as a .csv file	⊘	⊘	✓	Exported connection data either may be edited and/or reused.

Installation	vRD 1.5	vRD 2008	vRD 2009	Remarks
Unattended installation	⊘	✓	✓	
Microsoft .NET Framework	.NET 2.0	.NET 2.0	.NET 2.0	

Update/Upgrade	vRD 1.5	vRD 2008	vRD 2009	Remarks
Upgrade from previous versions	✓	✓	✓	With vRD 2009 settings of vRD 1.5 and vRD 2008 can be used.
Using mRemote-settings	⊘	⊘	✓	The changeover from mRemote to vRD will be simplified.

**Legend:**

- ⊘ not supported
- ✓ supported
- ✓+ improved

## Functions of the Different vRD Versions

### vRD 1.5

- > Freeware version without any limitations of the available functions

### vRD 2008 - evaluation mode

- > Usage only for 30 days
- > Neither export nor backup of objects

### vRD 2008 Express

- > Expiration date: March 31, 2009
- > No database mode
- > Only 5 credentials possible
- > Only 15 connection objects possible

### vRD 2008 - commercial full version

- > No limitations

### vRD 2009 - evaluation mode

- > Usage only for 30 days (both local and database mode)
- > Neither export nor backup of objects
- > 3 concurrent connections only

### vRD 2009 - freeware

- > No database mode, only local mode is available
- > 3 concurrent connections only
- > Only 15 objects may be exported or backed up
- > No email or hotline support (support forum is available)

## **vRD 2009 – commercial full version**

Database and local mode available

Unlimited concurrent connections (licenses sold per named admin)

Unlimited objects may be exported/backed-up

Full support (email, hotline or support forum)

Upgrade & support package covers upgrades for the selected period of time

## Disclaimer

### Disclosure and Warranty

The information, concepts, and ideas contained in this document are the property of visionapp AG. No part of this document may be disclosed or reproduced in any form without written permission of visionapp AG. Any violation thereof will be pursued.

All brand names and product names used in this document are trademarks of their respective holders and are recognized as such.

Any product descriptions or representations in this document are for identification purposes only and are not to be construed as a warranty of specific properties or guarantee or warranty of any other type. visionapp shall assume no liability, either explicit or implied, for the documentation.

All rights reserved ©visionapp AG, January 2009

### About visionapp

visionapp specializes in the design, implementation and operation of server-based infrastructure and portal solutions based on Microsoft and Citrix technologies. The company provides unique products and services for optimization and cost-effective administration of Windows Terminal Server infrastructures. visionapp Application Delivery Management Suite including visionapp Server Management and visionapp Workspace Management as well as consulting and ASP services form the core business.

The visionapp products and solutions will be provided through a worldwide certified partner network. Only in Germany visionapp delivers products and solutions directly to large enterprises. The SME market is also being supplied through certified partners.

### Further Information

visionapp AG  
Head Office Frankfurt am Main  
Helfmann-Park 2  
65760 Eschborn  
Germany  
web: [software.visionapp.com](http://software.visionapp.com)