

Remotely access and administer servers and desktops – across many OS and platforms

If you manage multiple remote connections, visionapp Remote Desktop 2009 (vRD 2009) is a powerful tool that saves you time and effort. Supporting multiple connection protocols, vRD 2009 allows you to administer Windows, Citrix, Linux/UNIX, and Macintosh systems. With over 120,000 users from all over the world, administrators agree that vRD 2009 is an indispensable tool for daily system administration.



Functionality

vRD 2009 simplifies the management of remote connections. It is ideally suited for administrators who require multiple simultaneous connections to different systems. In addition to the Remote Desktop Protocol (RDP), vRD 2009 adds support for a number of additional protocols, including ICA (Citrix), VNC, SSH, Telnet, HTTP, and HTTPS. With vRD 2009, connections can be individually configured and organized for quick access.

Ease of use

Administrators perform many recurring tasks on remote servers and workstations, such as renaming objects or enabling con-

nections. With vRD 2009, administrators can perform these tasks very quickly and efficiently by using shortcut keys for various functions. For large environments, the integrated search function helps to locate specific servers and desktops. When working in database mode, administrators can easily resume work where they stopped the previous day, because all the connection settings are saved.

Security as a central feature

With vRD 2009, administrators can use secure server authentication to access remote computers via RDP. vRD 2009 supports Network Level Authentication (NLA) and allows access to a Microsoft

Benefits of vRD 2009

- > Remotely manage Windows, Citrix, Linux/UNIX and Macintosh systems
- > Configure administrative permissions in database mode
- > Log access, errors and modifications (in database mode only)
- > Connect over multiple protocols, including RDP, ICA, VNC, SSH, and Telnet
- > Be secure with vRD's extended RDP security functions: Network Level Authentication, support for Microsoft Terminal Services Gateway, and server authentication

A:

Folder Structure

Computers can be logically grouped according to the company's structure. Connected users are displayed underneath the active connections.

B:

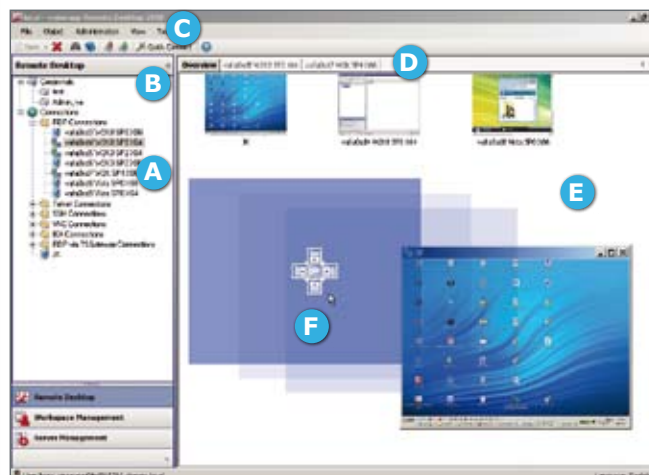
Login Credentials

Central storage of the information needed to access remote servers.

C:

Menu Bar

Use icons to perform administrative tasks like Export/Import with a single click.



D:

Tabs

Overview tab with all active connections as thumbnails. Each active connection is in a separate tab.

E:

Display Options

Display individually active connections in a separate window.

F:

Position Navigator

Individually arrange active connections in separate windows. Create an overall view of all active connections.

Terminal Services Gateway. With vRD 2009, RDP can also access in-house terminal servers via the Internet without having to open the RDP port in the organization's firewall.

Database mode

In large IT infrastructures, several administrators often have to access the same connections at the same time. All login credentials and connection objects may be stored in a central database. With vRD 2009 connected to this database it is possible for multiple administrators to create, change, view, and modify settings according to the assigned permissions.

Connection settings

Many administrators have to perform the same task on multiple connections. vRD 2009 allows administrators to apply many tasks across multiple connections with a single click! For instance, you can simultaneously connect or disconnect all servers within a folder with a simple double-click. The Quick Connect feature allows you to start individual connections without previously creating a connection object.

Display

vRD 2009 provides many display options, such as a global view of all connected servers. The Smart Sizing feature allows the dis-

play of remote desktops without scrollbars – even when the display is resized.

Reporting

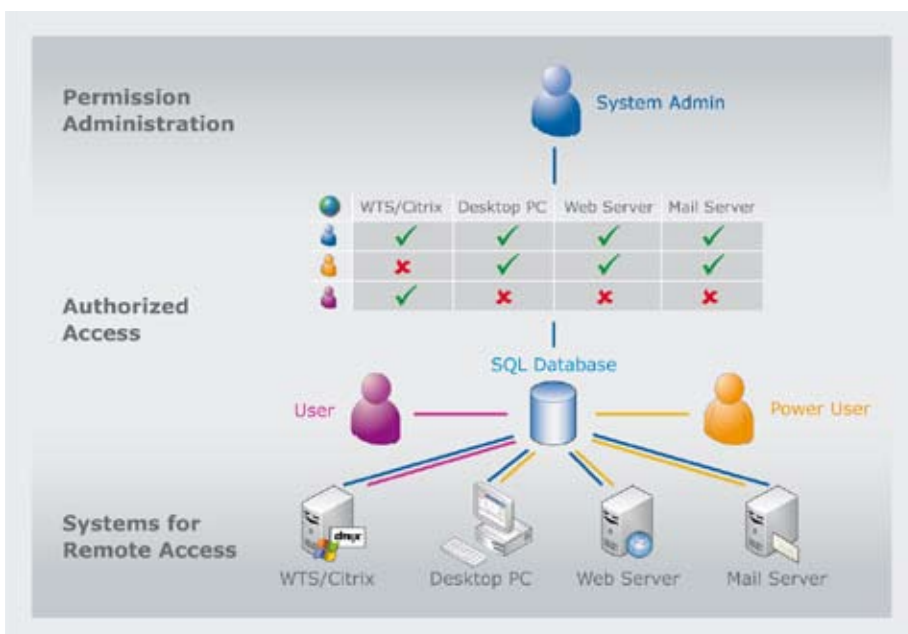
The Connection History displays a list of the most recently used connections and allows you to reopen them. Also, the software logs which login credentials were used to access the remote system. In database mode, vRD 2009 provides various logs (errors, changes, security) that make it easier for you to trace events and activities.

Configuration settings

vRD 2009 provides a wide range of configuration options. For instance, vRD 2009 allows you to automatically start a remote computer through "Wake on LAN" using the MAC address. Also, when using SSH or Telnet, a modified PuTTY integrated into vRD 2009 allows you to separately configure and directly use individual sessions.

Backup and Restore

All settings can be backed up in a password-protected file and restored. You can export and re-import selected connection objects whenever necessary. And migrating or updating to vRD 2009 is a snap: you can even restore data from previous vRD versions or from other tools such as mRemote.



Configure administrative permissions within vRD 2009

» I have loved this app for years; vRD is a server admin's dream! «

Paul Nolette, Oldcastle Precast

» The consistency and standardization of access is priceless! «

Rui Fidalgo, Getty Images

System requirements

- > Microsoft Windows XP with SP3 or higher, x86 or x64 platform
- > Microsoft Windows Server 2003 and 2003 R2, all editions with SP1 or higher, x86 or x64 platform
- > Microsoft Windows Vista SP1, x86 or x64 platform
- > Microsoft Windows Server 2008, x86 or x64 platform
- > Microsoft .NET Framework 2.0 (available at the Microsoft website, www.microsoft.com)

Licensing

- > Per named administrator
- > Enterprise licenses (country and global) are also available

Web addresses

Product Information & Online Shop
www.vRD2009.com

Support
www.visionapp.com/support

VISIONapp™

Head Office (DE)

Helfmann-Park 2
65760 Eschborn
phone: +49-69-79583-0

London Office (GB)

Fifth Floor 101 Moorgate
London EC2M 6SL

info@visionapp.com
www.visionapp.com